



# GT16-4

# Sealed Maintenance Free Battery



### Features

- Advanced sulfate-resistant technology.
- Advanced calcium lead alloy technology.
- Maintenance-free design.
- Factory activated, Ready to install and go!
- Absorbed Glass Mat (AGM) technology.

### Performance Specifications

Nominal Voltage ----- 12 volts

Nominal Capacity 25 °C (77°F)

20-hr. (0.8A to 10.5 volts) -----	19.50AH
10-hr. (1.6A to 10.5 volts) -----	18AH
5-hr. (3.2A to 10.2 volts) -----	13.1AH
1C. (16A to 9.6 volts) -----	7.2AH
3C. (48A to 9.6 volts) -----	5.8AH

Approximate Weight ----- 10.47bs. (4.76kg)

Cranking (by Tester) ----- 330Amperes

Cold Cranking (-18 °C) ----- 235Amperes

Internal Resistance(at 1KHz) ----- Approx.8.8mΩ

Operating Temperature Range

Discharge ----- -22°F(-30 °C) to 122°F(50 °C)

Charge ----- 32°F(0 °C) to 104°F(40 °C)

Life Expectancy (Cycle Use)

60% depth of discharge ----- 250 cycles

30% depth of discharge ----- 400 cycles

Shelf Life (% of normal capacity at 68°F(20 °C).....SOC% ocv)

1 months ----- 91% 12.78V

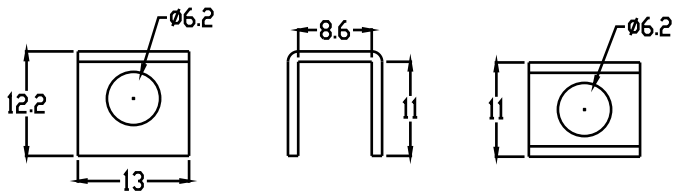
3 months ----- 89% 12.70V

6 months ----- 80% 12.5V

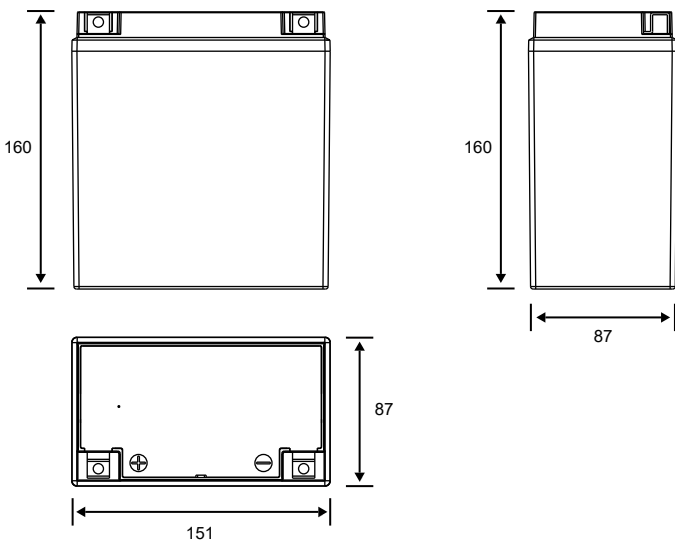
Warranty ----- 1 year

Case ----- ABS

### Terminal Dimensions: (in./mm)



### Physical Dimensions: (in./mm)



Length:5.94in(151mm) Width:3.43in(87mm)  
Height:6.30in(160mm)

Tolerances are  $\pm 0.04$  inches ( $\pm 1$ mm) and  $\pm 0.08$  inches ( $\pm 2$ mm) for height.

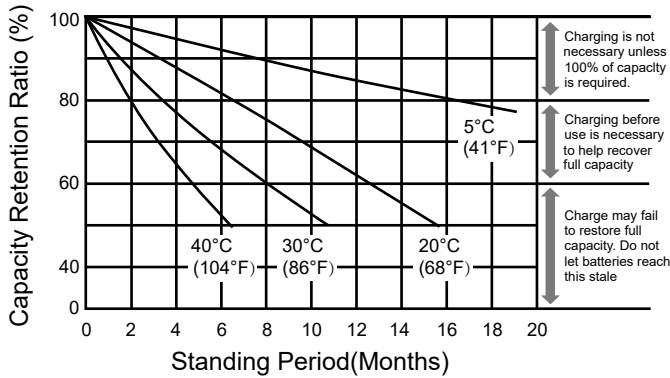


Inner box

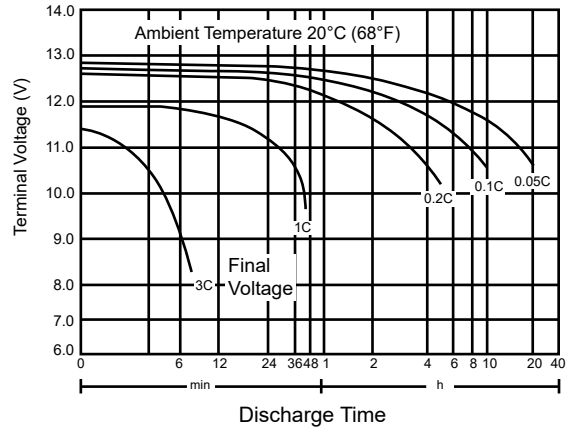
Screws and nuts



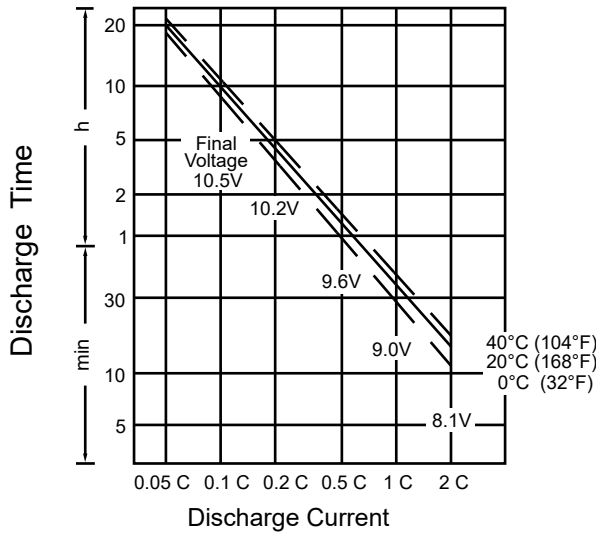
### Shelf life & Storage



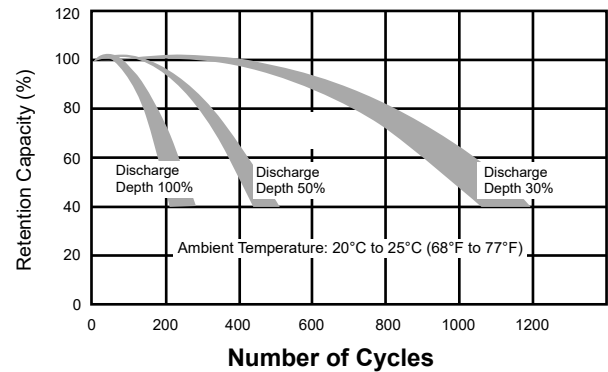
### Discharge Characteristics



### Discharge Time vs. Discharge Current



### Life Characteristics in Cyclic Use



### Charging

**Cycle Applications:** Limit initial current to 0.2C. Charge until battery voltage (under charge) reaches 14.8 to 15.0 volts at 68°F (20°C). Hold at 14.8 to 15.0 volts until current drops to under 50 mA. Battery is fully charged under these conditions, and charger should be disconnected or switched to "float" voltage.

**Note:** Due to the self-discharge characteristics of this type of battery, it is imperative that they be charged within 6 months of storage, otherwise permanent loss of capacity might occur as a result of sulfation.

### Further information:

Please contact our technical department for advice if you have difficulty or contact us at [kaijie@kaijie.net](mailto:kaijie@kaijie.net)

### Can be used to replace:

YTX16-BS			